

## Computer-controlled workshop unit type HPU-CC series



Example HPU-CC series

Resato computer-controlled test units that can be integrated into your own test compartment or test bay. Pressure range: 2000 – 4000 – 7000 – 10000 bar

### Key Features computer-controlled unit

- Increased productivity through quick data gathering and instant test certificate creation.
- Increased productivity by testing multiple objects in one test and individual test certificates creation.
- Increased quality through predefined testing.
- Test certificates are automatically generated and form an integral part of your quality system.
- Integrated TCPIP connection offers full remote assistance from our home office, if required.

### Key Features high pressure system

- Ergonomic and modular design
- Suitable for pressurizing fluids or gases
- Touch screen operation
- All parts made of non-corrosive materials
- Easy and low-cost maintenance
- Proven reliability
- Low noise level.

### Functioning

Resato computer-controlled workshop units can be used to pressurize valves, fittings, hoses, piping, vessels and wellhead equipment. Testing procedures are fully automated.

All components, including the required connecting materials and tubing are mounted in a powder-coated steel frame. Resato computer-controlled workshop units are manufactured according to European regulations and will be delivered including:

- Operating manual, Maintenance manual and spare parts manual
- Test certificate
- Calibration certificates for transmitters.

### Options

- Separate control console
- Test compartment entrance safety control
- Reservoir or direct water feed
- Warning lights
- Camera systems.



## RESATO INTERNATIONAL BV

1e Energieweg 13  
P.O. Box 30

NL-9301 LK  
NL-9300 AA

Roden – Holland  
Roden - Holland

Phone: +31 (0) 50 501 6877  
Fax: +31 (0) 50 501 2402

E-mail: [hpsales@resato.com](mailto:hpsales@resato.com)  
Internet: [www.resato.com](http://www.resato.com)

Please note that general data and specifications given in this brochure are subject to change without notice.

Feel free to contact our sales department if you need more definite information.

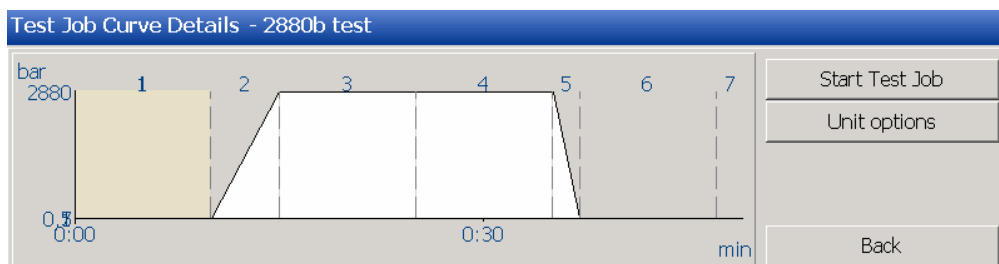
080814

## FEEL FREE TO ASK FOR A SOFTWARE DEMO

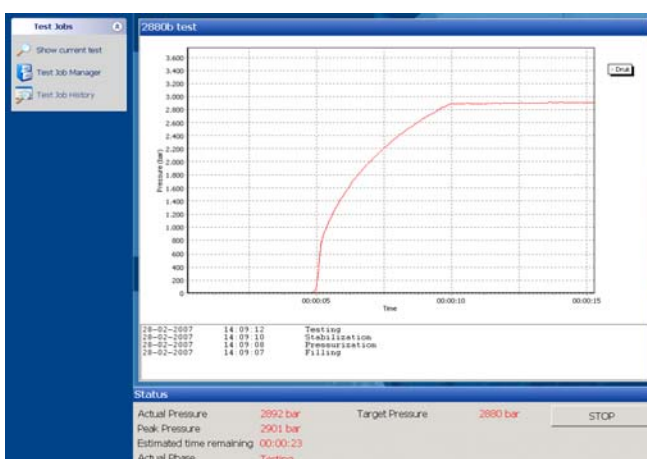
Test Job Object Details - 2880b test

Object	13/6H	Connector type	9/16" - 18 UNF-LH m	Start Test Job
Working pressure	1.920,00 bar	Connector type	9/16" - 18 UNF-LH m	More >>
Test pressure	2.880,00 bar	Diameter I.D.	12,70 mm	
Burst pressure	4.800,00 bar	Diameter O.D.	24,60 mm	
Test time	10 sec	Object length	3.500,00 mm	Back

Easy entry of test parameters



Easy refinement of test cycle parameters



Actual test graph



Certificate

## RESATO INTERNATIONAL BV

1e Energieweg 13  
P.O. Box 30

NL-9301 LK  
NL-9300 AA

Roden - Holland  
Roden - Holland

Phone: +31 (0) 50 501 6877  
Fax: +31 (0) 50 501 2402

E-mail: [hpsales@resato.com](mailto:hpsales@resato.com)  
Internet: [www.resato.com](http://www.resato.com)

Please note that general data and specifications given in this brochure are subject to change without notice.

Feel free to contact our sales department if you need more definite information.