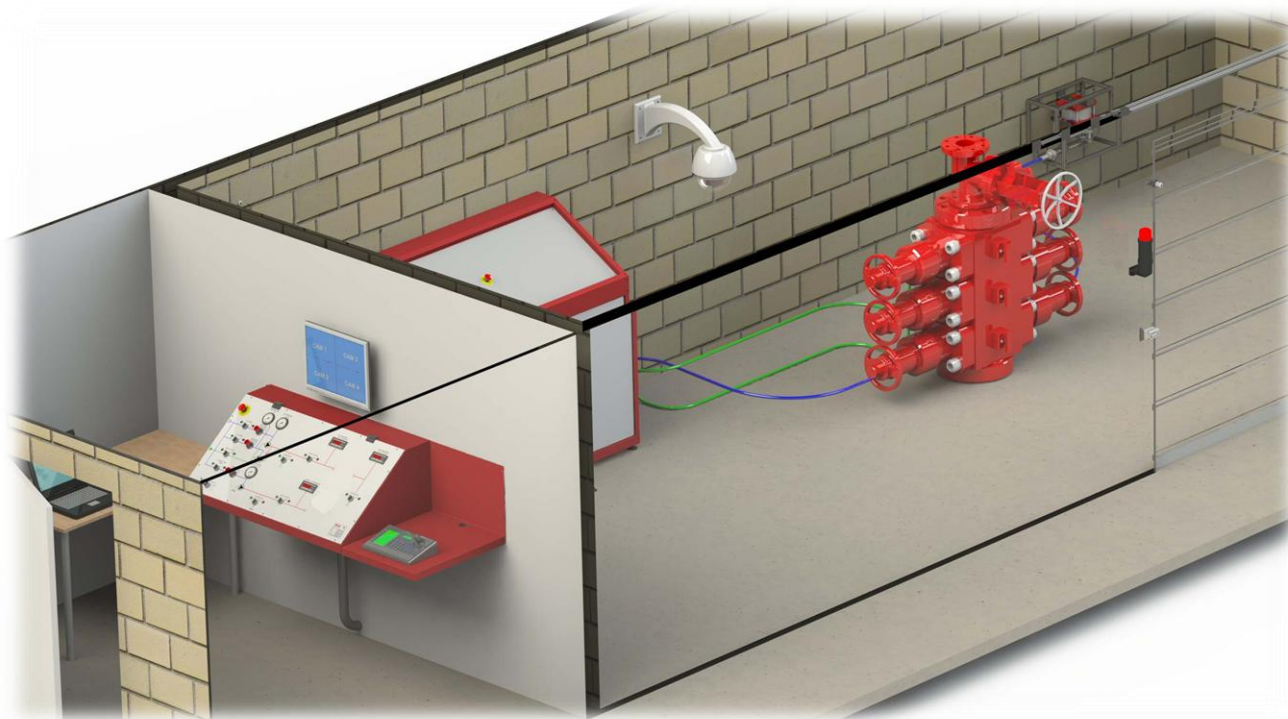


Workshop test unit type HPU-sep series

Separated test solutions



Wherever high-pressure testing is required with maximum safety, a Resato workshop test type separated will provide it.

By having the high pressure unit separated from the operating panel combined with the other safety features like door-switches, emergency stop buttons etc, a reliable and safe solution is designed for pressure testing of objects ranging from iron to safety valves and BOP's.

By use of a dual pump setup and multiple pressure transmitters, the system generates digital test certificates in the test range: 500 psi up to 25,500 psi.

Safety

- Fully separated setup (no high pressure components outside the test bay)
- Emergency stop button
- A unit mounted safety light indicates pressure build up
- Door safety switches
- Remote de-airing (Basic+ excluded)
- No test bay entrance for pressures > 300 psi
- Engraved operating panel
- Wall mounted operating panel which allows a chair to roll under.

Unit options

- Hoses, hose reel, adapters and quick connectors
- Door locking actuator
- Override switch for test bay entrance (one or multiple test bays)
- Extra flashing lights
- Pre-fill system
- Interchangeable calibration solution
- Camera systems
- Others on request

Available in 4 configurations

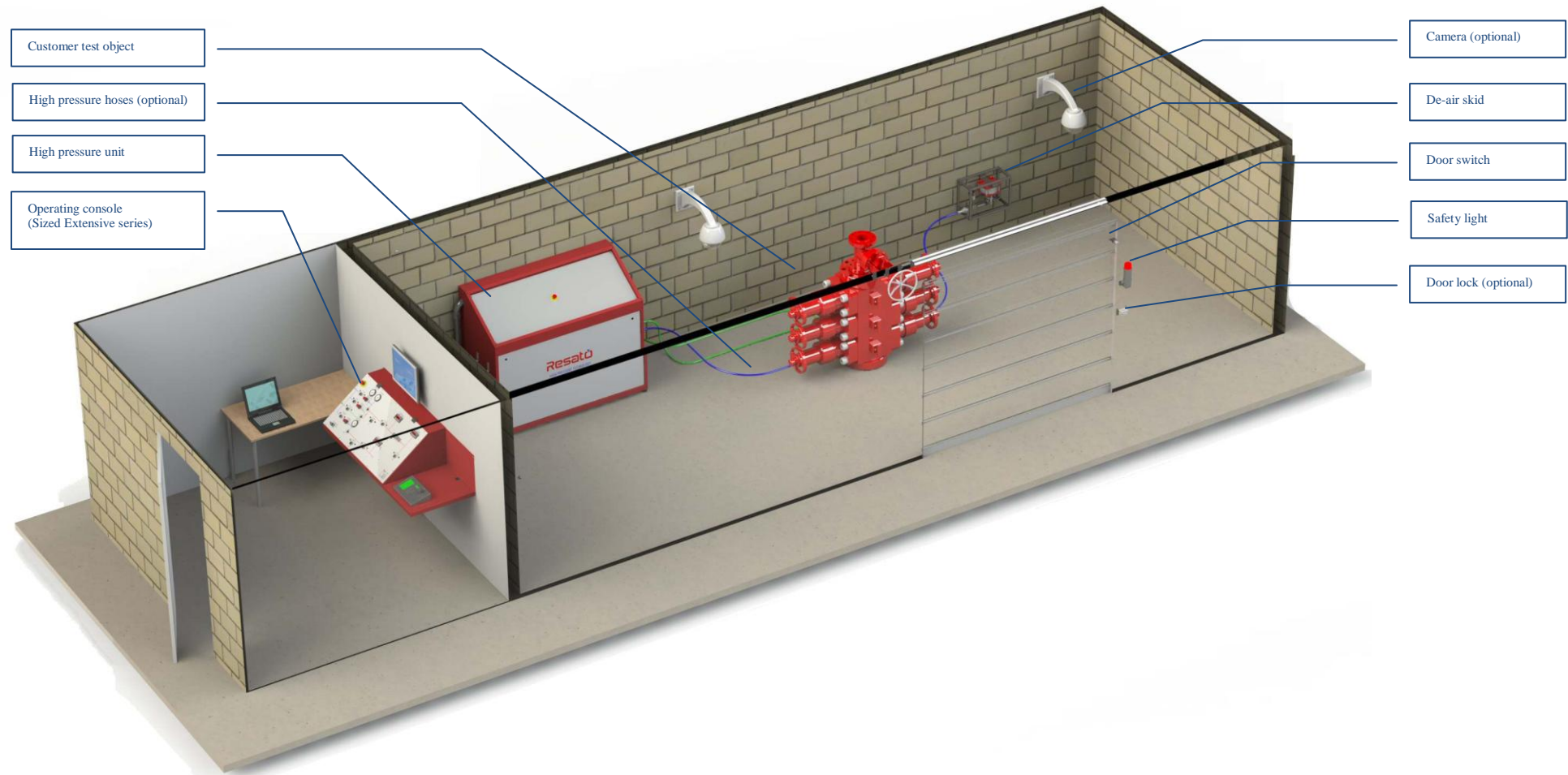
- HPU-SEP-S1
- HPU-SEP-S2
- HPU-SEP-S3
- HPU-SEP-S4

Regulations

Resato manual-controlled workshop units are manufactured according to European regulations and will be delivered including:

- Operating manual, maintenance manual and spare parts manual
- Test certificate
- Calibration certificates for transmitters.

System overview



General overview standard solutions

HPU-SEP-S1

Key features high pressure system

Test lines

- 1 hydrostatic test line: 25,500 psi
- Pump setup by means of low pressure / high volume and high pressure / low volume pump setup to ensure pressure setting from 300 psi up to 25,500 psi.
- Object protection by means of programmable maximum unit pressure and controlled pressure bleed.

Measurement

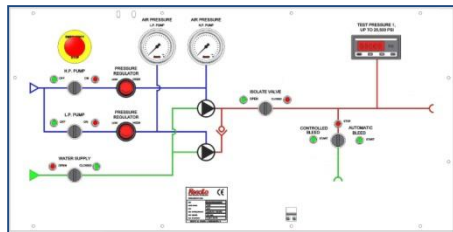
- Panel mounted digital read-outs ensures accurate reading
- Test certificates are easily created by use of build in data acquisition system.
- Measuring accuracy: 0,5% FS

Safety

- Emergency stop button
- Safety light
- Door safety switches
- Remote de-airing
- No test bay entrance for pressures > 300 psi
- Engraved operating panel
- Fully separated setup (no high pressure components outside the test bay)
- Wall mounted operating panel which allows a chair to roll under.

System

- Air operated valves enables smooth operation and ensures long durability.
- Proven reliability
- Low noise level.



HPU-SEP-S2

Key features high pressure system

Test lines

- 1 hydrostatic test line: 25,500 psi
- Pump setup by means of low pressure / high volume and high pressure / low volume pump setup to ensure pressure setting from 300 psi up to 25,500 psi.
- Object protection by means of programmable maximum unit pressure and controlled pressure bleed.
- De-air skid

Measurement

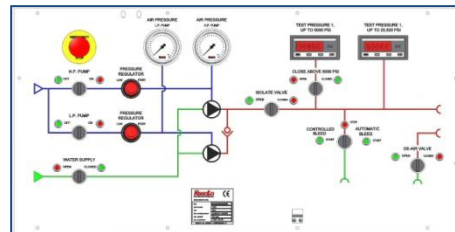
- Panel mounted digital read-outs ensures accurate reading
- Low pressure readout on test line
- Provided with multiple pressure transmitters to ensure absolute accuracy < 3% within range 900 – 25,500 psi.
- Test certificates are easily created by use of build in data acquisition system.
- Measuring accuracy: 0,5% FS

Safety

- Emergency stop button
- Safety light
- Door safety switches
- Remote de-airing
- No test bay entrance for pressures > 300 psi
- Engraved operating panel
- Fully separated setup (no high pressure components outside the test bay)
- Wall mounted operating panel which allows a chair to roll under.

System

- Air operated valves enables smooth operation and ensures long durability.
- Proven reliability
- Low noise level.



HPU-SEP-S3

Key features high pressure system

Test lines

- Dual hydrostatic test line: 25,500 psi
- Pump setup by means of low pressure / high volume and high pressure / low volume pump setup to ensure pressure setting from 300 psi up to 25,500 psi.
- Object protection by means of programmable maximum unit pressure and controlled pressure bleed.
- De-air skid

Control line

- Dual control line: 10,000 psi
- 10,000 psi rated 4/3 valves with possibility to use a single control line to operated both spring return as dual acting type objects (eg BOP and safety valves)
- Pump setup by means of high pressure pump
- Build in 40 litres reservoir
- Inline 5 micron high pressure filter ensures clean fluid.

Measurement

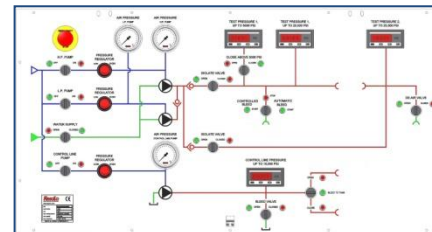
- Panel mounted digital read-outs ensures accurate reading
- Low pressure readout on test line
- De-air skid with build in pressure transmitter
- Provided with multiple pressure transmitters to ensure absolute accuracy < 3% within range 900 – 25,500 psi.
- Test certificates are easily created by use of build in data acquisition system.
- Measuring accuracy: 0,5% FS

Safety

- Emergency stop button
- Safety light
- Door safety switches
- Remote de-airing
- No test bay entrance for pressures > 300 psi
- Engraved operating panel
- Fully separated setup (no high pressure components outside the test bay)
- Wall mounted operating panel which allows a chair to roll under.

System

- Air operated valves enables smooth operation and ensures long durability.
- Proven reliability
- Low noise level.



HPU-SEP-S4

Key features high pressure system

Test lines

- Dual hydrostatic test line: 25,500 psi
- Pump setup by means of low pressure / high volume and high pressure / low volume pump setup to ensure pressure setting from 300 psi up to 25,500 psi.
- Object protection by means of programmable maximum unit pressure and controlled pressure bleed.
- De-air skid

Control line

- 4x dual control line: 6,500 psi
- 7,000 psi rated 4/3 valves with possibility to use a single control line to operated both spring return as dual acting type objects (eg BOP and safety valves)
- Pump setup by means of high pressure pump
- Build in 40 litres reservoir
- Inline 5 micron high pressure filter ensures clean fluid.

Measurement

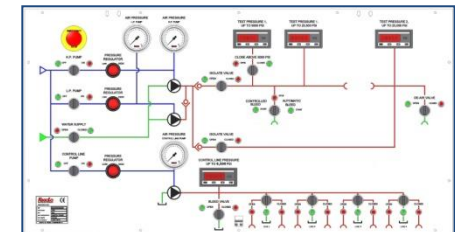
- Panel mounted digital read-outs ensures accurate reading
- Low pressure readout on test line
- De-air skid with build in pressure transmitter
- Provided with multiple pressure transmitters to ensure absolute accuracy < 3% within range 900 – 25,500 psi.
- Test certificates are easily created by use of build in data acquisition system.
- Measuring accuracy: 0,5% FS

Safety

- Emergency stop button
- Safety light
- Door safety switches
- Remote de-airing
- No test bay entrance for pressures > 300 psi
- Engraved operating panel
- Fully separated setup (no high pressure components outside the test bay)
- Wall mounted operating panel which allows a chair to roll under.

System

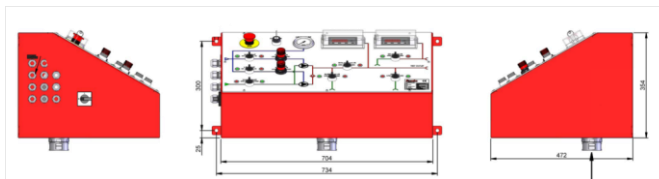
- Air operated valves enables smooth operation and ensures long durability.
- Proven reliability
- Low noise level.



Dimensions HPU-SEP-S1 & HPU-SEP-S2

Dimension control pane

Width : 750 [mm]
Height : 350 [mm]
Length : 650 mm
Mass : 60 kg



Dimension high pressure unit

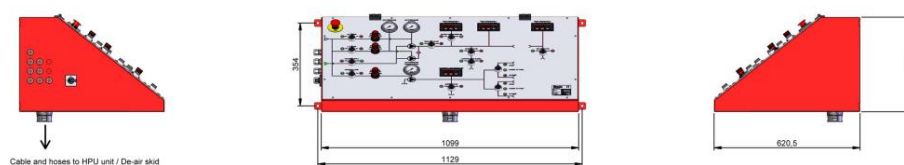
Width : 1100 [mm]
Height : 1250 [mm]
Length : 650 mm
Mass : 200 kg



Dimensions HPU-SEP-S3 & HPU-SEP-S4

Dimension control panel

Width : 1150 [mm]
Height : 450 [mm]
Length : 650 mm
Mass : 80 kg



Dimension high pressure unit

Width : 1500 [mm]
Height : 1250 [mm]
Length : 650 mm
Mass : 250 kg



Connections

High pressure connection: : FU3 (1 1/8"-12 UNF for 9/16" HP tube)

Inlet connection : 1/2" BSP-F

Drain : 1/2" BSP-F

Air inlet connection : 1/2" BSP-F

Electric : 240VAC, 50 Hz (or to be discussed)

USB

Test medium : Water or mineral based hydraulic fluids
(Alternatives available on request)