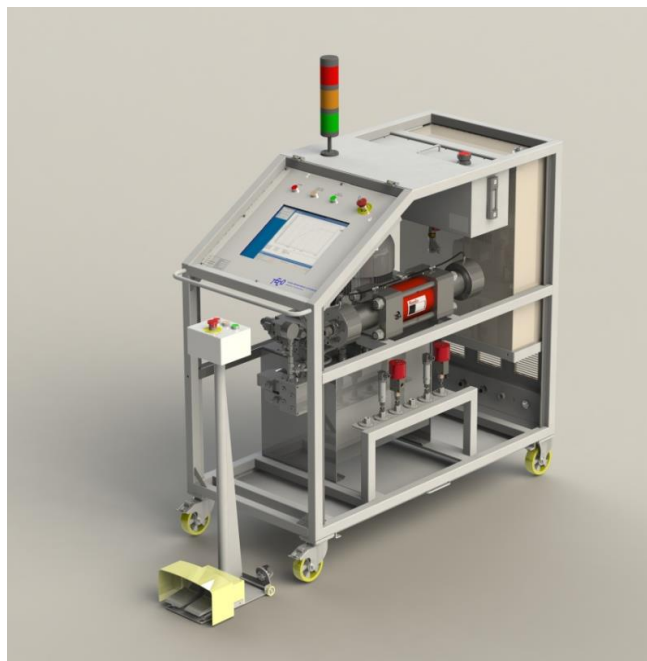


Hydro Expansion Unit up to 4000 bar / 60,000 psi

Type Resato OTE5,5-1-20



Resato Hydro Expansion Unit OTE5,5-1-20 up to 4000 bar / 60,000 psi

The Hydro Expansion Unit has been developed for tube expanding during construction of heat exchangers, condensers, steam generators, cooling apparatus or other expanding type processes. Driven by a Resato high pressure / high volume Water Jet based intensifier guarantees highly proven reliability, simple maintenance and low running costs.

Effortless expanding of large wall thickness tubes without occurrence of flaking. A touch screen operation panel and object parameter entry ensures a precisely tube expanding process.

Key features

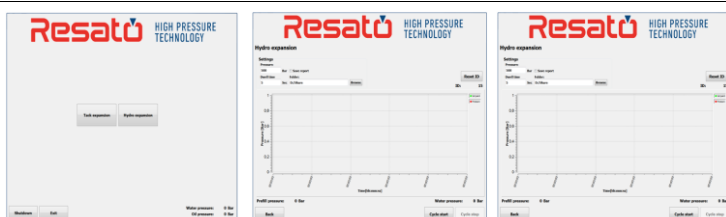
- Fully computer controlled
- Both touch screen as foot pedal operation
- Automatic cycle performance
- Integrated remote VPN support
- Stainless steel high pressure components

Process features

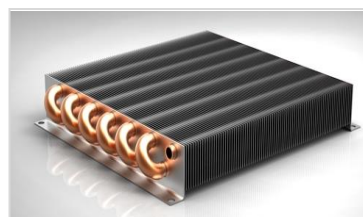
- Stepless tube expanding
- Less metallurgical deformation than rolling tube expanding
- No distortion of the tube sheet, there is no extension of the tube
- Smooth contour change between expanded part and not expanded part
- No use of lubricant, no need for tube cleaning after expanding

Working principle

Step 1: Parameter entry



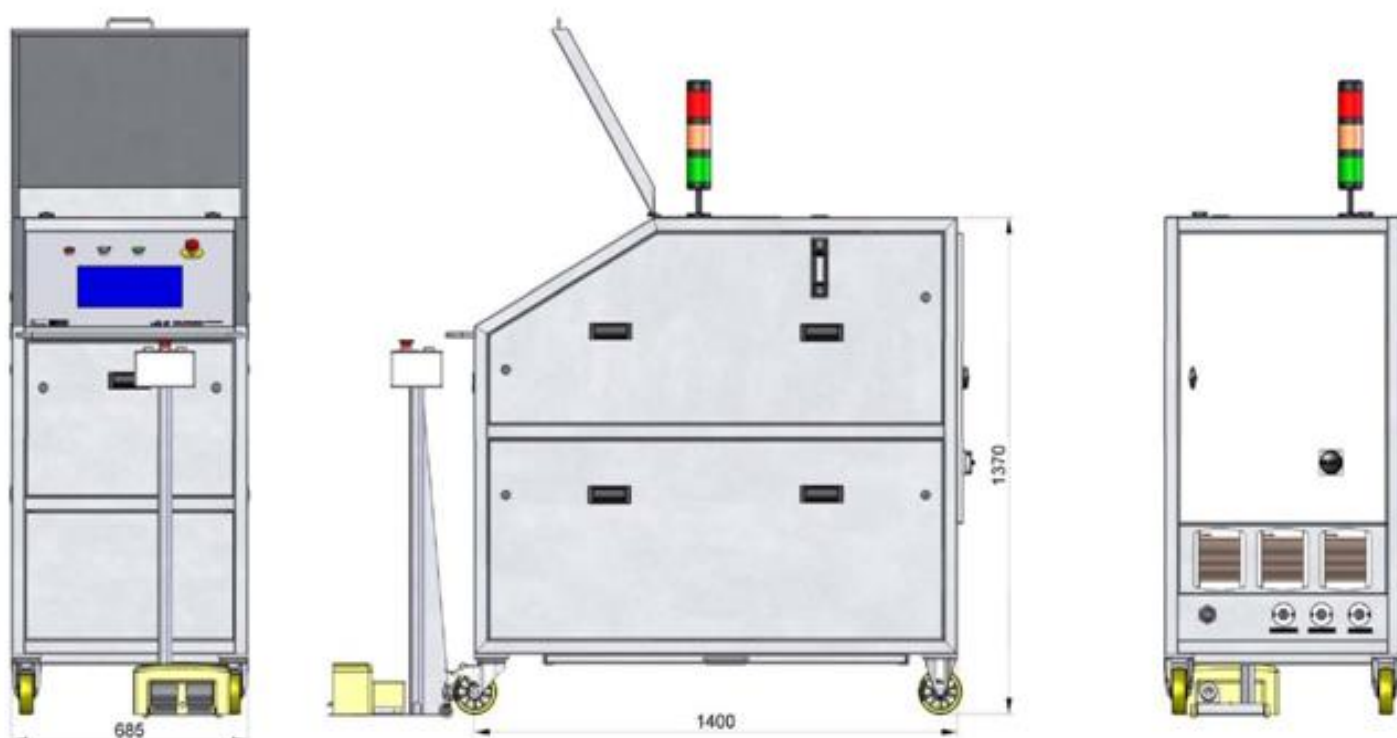
Step 2: Expanding cycle



Step 3: Logging



Dimensions



Technical specifications

Power	: 400 VAC, 50 Hz, 5,5 kW
Water reservoir	: 25 liter
Max. water pressure	: 4000 bar / 60,000 psi
Max. tack pressure	: 350 bar / 5,000 psi
Cooling	: Air-oil cooler with oil filter
Intensifier	: Resato IOP115-20-2
Max. high pressure water capacity	: 1.2 l/m
High pressure connection	: M20x1,5 HP-female
Tack high pressure supply	: 1/2" NPT-female
Tack return	: 1/2" NPT-female
Data connection	: RJ 45 Ethernet & USB

Safety

- Automatic pressure relief if the unit is switched off
- Emergency stop
- Safety light

Certification

- The unit will be manufactured and marked with CE mark according to the European regulations and standards.
- The unit will be delivered with manual including operating and maintenance instructions in English with detailed part list.

Available accessory: High pressure hose

- Maximum working pressure 4000 bar included collars and glands, safety grips, hose guard and test certificate