

Single well control unit type SPP-10

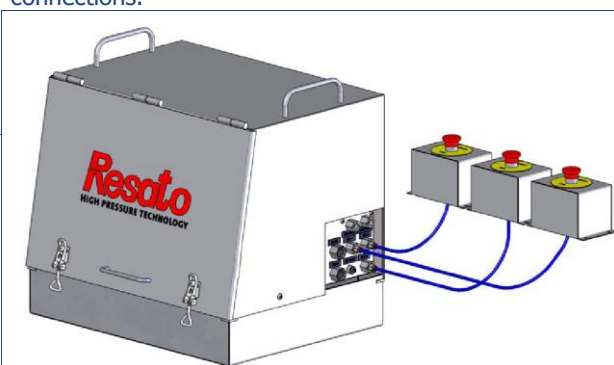


Resato single well control panel

The SPP-10 control unit is designed to control one surface or subsurface safety valve. The unit provides both an emergency shutdown (ESD) and manual operation mode. The ESD mode is controlled by a remote pilot valve and is activated whenever the pilot pressure is too low. The ESD mode is also activated in case of an air (gas) supply failure.

The SPP-10 is provided with an air driven pump, which can also be operated manually and a specially designed hydraulic three-way valve complete with a manual override. Various gauges display the control system status. Should the air supply fail or drop too low to operate properly, the safety valve can be completely operated manually with the manual device of the air driven pump and the manual override of the hydraulic three-way valve.

The control unit has a self-contained reservoir. The reservoir, panel, cover, tubing and fittings are made of stainless steel. For safety reasons all high pressure tubing and fittings are provided with autoclave type connections.



Main features

Qty	Item
1	Hydraulic output control line (10,000 psi)
1	Air driven high pressure pump (type P80-81/M) with manual backup-function
1	ESD button
3	External ESD connections
2	Glycerine filled air pressure gauges 0-200 psi
1	Glycerine filled air pressure gauge 0-600 psi
2	Glycerine filled high pressure gauges 0-15,000 psi
2	Air pressure regulators
1	Manual override valve
1	Reservoir 28 l
1	Protective cover

Options

- Available in 6,000 & 15,000 psi version.
- Remote ESD buttons with loop functionality
- High- low pilot valves.
- Quick exhaust
- Atex certification.
- Available as 2 line unit. (SPP-10-2)

RESATO INTERNATIONAL BV

1e Energieweg 13
P.O. Box 30

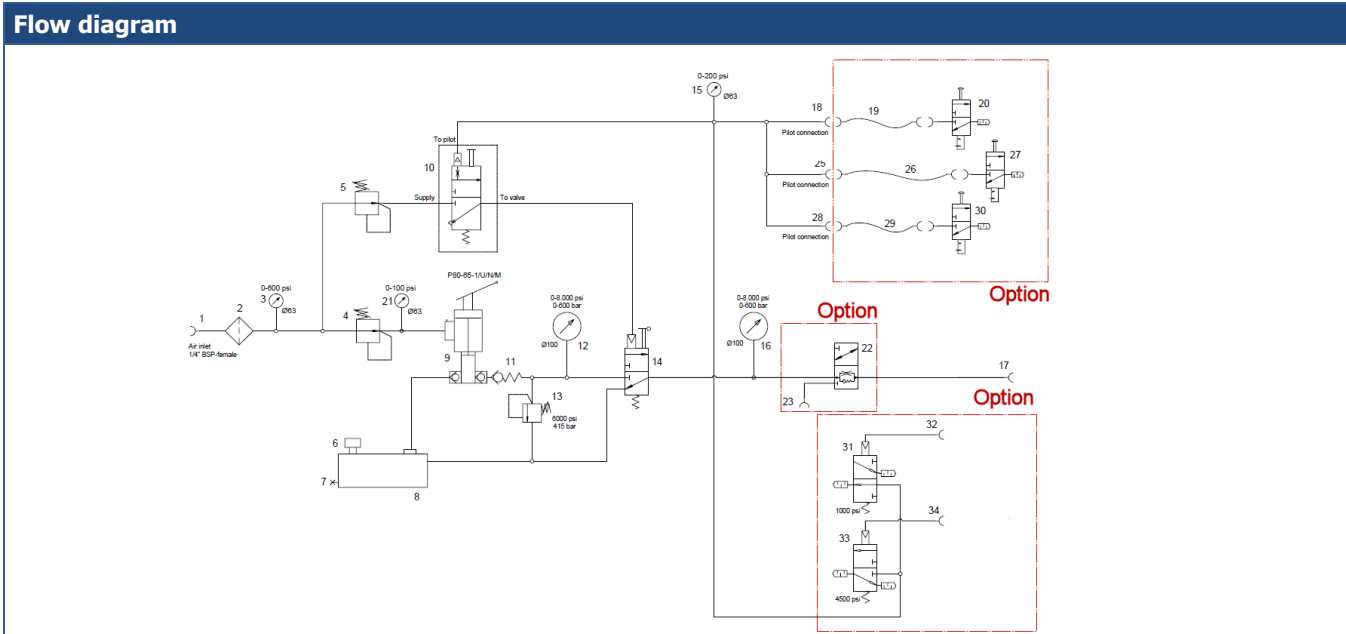
NL-9301 LK Roden – Holland
NL-9300 AA Roden - Holland

Phone: +31 (0) 50 501 6877
Fax: +31 (0) 50 501 2402

E-mail: hpsales@resato.com
Internet: www.resato.com

Please note that general data and specifications given in this brochure are subject to change without notice.
Feel free to contact our sales department if you need more definite information.

Dimension & Connections		Dimensional drawing	
Length	: 610 mm		
Width	: 470 mm		
Height	: 520 mm		
Mass	: 51 kg		
Tank	: 28 litre		
Hydr. fluid	: Any mineral based hydraulic fluid		
Connections	: 1/4" NPT F		



2 lines SPP series (SPP-10-2)

To operate multiple valves, the SPP series is also available as a two line setup. These 2 lines SPP series are available on request.

- ### Main features
- | Qty | Item |
|-----|--|
| 2 | Hydraulic output control line (10,000 psi) |
| 2 | Air driven single acting high pressure pumps (type P80-81/M) with manual backup-function |
| 1 | Reservoir 40 l |
| 4 | Air pressure gauges 0-200 psi |
| 1 | Air pressure gauge 0-600 psi |
| 4 | High pressure gauges |
| 2 | Manual backup pump |
| 3 | Pressure regulators |
| 2 | Manual override valve |
| 1 | ESD button with loop functionality |
- Options:**
- Automated selection manifold for nitrogen & air inlet with indicators and automated switch
 - (Extra) ESD buttons with loop functionality
 - Multiple pressure ranges
 - Combined and timed ESD loop systems

